



# NEWSLETTER

## Message from the President

Welcome to the February 2025 ELSO newsletter.

Ring in the new year, there is much to look forward to in 2025, the year of the wood snake on the Lunar calendar, a year of wisdom and transformation. The first transformation for ELSO

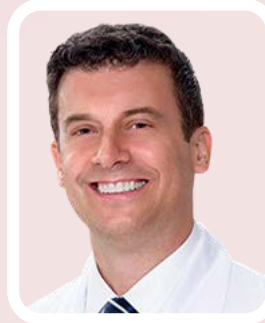
may be seen in changes to our leadership. For one, I am truly humbled to take on the role of president and look forward to serving all of you over the next couple years.

Most notably, I am following in the footsteps of my friend and colleague, Graeme MacLaren, who has transitioned from President to Past-President. Graeme's leadership of the organization has been exceptional over the last two years. Graeme, known for his eloquence and wide-ranging knowledge (including for the finest of whiskeys), brought a wealth of both clinical and research expertise in ECMO across age groups, disease states and geographic regions to the position. This proved invaluable as he guided ELSO through a period of growth punctuated by many important accomplishments. We are grateful to have his continued wisdom close at hand for two more years.

Other important transitions in our Global Board and Steering Committee are found below. And, in coming newsletters, we will cover many of the upcoming events and exciting initiatives that will fill 2025 and beyond. For today, I want to first express my utmost gratitude to the engine that drives ELSO forward, our leadership and office staff: Many thanks to Christine, Peter, Liz, Alex, Lauren, Victoria, JoAnne, Phil, Tammy, and Velia for all they do day in and day out to make the organization so enormously successful; to thank our illustrious chapter leadership for ELSO's success across continents; and to thank Bob and Wanda Bartlett for the inspiration that keeps us all going. Of course, most importantly, I want to thank all of you, our members, for all you do for ELSO and for patients throughout the world. Together, we will move the field forward.

Happy new year!

**Dan Brodie, President, ELSO**



## IN THIS ISSUE

President's Message	1
Conferences	2
Committee Roundup	3
Communities & Survey Alley	9
Bedside with Bartlett	10
Chapter Updates	12
CEO Remarks	14



## CHAPTER CONFERENCES



### 13th Annual EuroELSO Conference

**Location:** Milan, Italy  
**Dates:** April 23rd - April 26th, 2025



### 7th Annual APELSO Conference

**Location:** Beijing, China  
**Dates:** July 10th - July 12th, 2025



### 7th LATAM Conference

**Location:** San Jose, Costa Rica  
**Dates:** November 5th - November 7th, 2026

The latest information on ELSO & Collaborative Meetings can be found [here](#).



## COMMITTEE ROUNDUP

### ELSO Conference Committee

Planning is now underway for the 36th Annual ELSO Conference, which will be taking place in Washington DC September 27-30, 2025. We are preparing an exciting program which will include:

- **Hot Topics & Debates** – Engage with experts on the most pressing controversies and emerging trends in ECMO.
- **Real-World Case Studies** – Learn from complex patient cases and expert-led discussions.
- **Interdisciplinary Collaboration** – Connect with nurses, surgeons, intensivists, perfusionists, and ECMO specialists to enhance team-based care.
- **More Interactive Opportunities** – Experience interactive training on ECMO techniques, from common scenarios to complex challenges.

Registration will be live in March! Please keep an eye on our social media channels for more information.



The latest information on ELSO & Collaborative Meetings can be found [here](#).



## Education Committee/ELSO Academy

- We completed the SWACC ELSO Train The Trainer course at Cleveland Clinic Abu Dhabi, featuring 32 delegates and instructors from all ELSO chapters.
- We're thrilled about the success of the SCCM Congress ELSO simulation course which had approximately 90 participants.
- Stay tuned for the launch of the ELSO Initiatives dashboard, which will allow the community to connect directly with projects that interest them.



*Train the Trainer participants at SWAAC ELSO*

## 2025 Course Dates

Our Spring 2025 ELSO Simulation Center Education activities are live on ELSO Academy. Throughout the year we are offering a variety of Adult Simulation, Neo/Peds Simulation, and Cannulation courses. Please keep an eye on the [ELSO Website](#) as well as ELSO Academy to see course dates and sign-up!

## Spring 2025 Courses

### ELSO Extracorporeal Membrane Oxygenation (ECMO) Adult Simulation Course

**Dates:** April 8-9, 2025 (Session 1) & April 10-11, 2025 (Session 2)

**Location:** ELSO Headquarters

**Address:** 3001 Miller Road Ann Arbor, MI, USA



**FEW SPOTS  
REMAINING**

### ELSO Adult Cannulation Workshop

**Dates:** April 12, 2025 (Session 1) & April 13, 2025 (Session 2)

**Location:** ELSO Headquarters

**Address:** 3001 Miller Road Ann Arbor, MI, USA



**WAIT LIST  
ONLY**

### ELSO Extracorporeal Membrane Oxygenation (ECMO) Adult Simulation Course

**Dates:** May 6-7, 2025 (Session 1) & May 8-9, 2025 (Session 2)

**Location:** ELSO Headquarters

**Address:** 3001 Miller Road Ann Arbor, MI, USA



**CURRENTLY  
AVAILABLE**

All Endorsed courses can be found [HERE](#)

All non-ELSO courses/events can be found [HERE](#).

## Quality Committee - Award of Excellence

We extend our congratulations to the new recipients of the Platinum, Gold, and Silver Awards! This designation commences on 1/1/25 and concludes on 12/31/27.

The 2025 application cycle is closing very soon! If selected for a site visit, you will be contacted via email. Award dates for this cycle will be 2026-2028.

If you have any questions, please contact us at [award@elso.org](mailto:award@elso.org)



---

## Publications Committee

ELSO has a growing list of publications available.

- New guidelines – always free and available to our community (Guidelines are [here](#))
- The ELSO Red Book – 6th Edition
- ECMO Specialist Training Manual – 4th Edition (*5th Edition in development*)
- ECPR and Resuscitative ECMO
- Post-Cardiotomy ECLS and other Temporary Mechanical Circulatory Supports in Adult Patients, with Roberto Lorusso as Senior Editor and a robust team of international authors.
- Neonatal and Pediatric ECMO Simulation Scenarios – developed in partnership with IPSS
- A Korean translation of the ELSO Red Book – 5th Edition
- Spanish translations of the ELSO Red Book – 4th Edition and ECMO Specialist Training Manual – 4th Edition

Visit our website for the full list of publications available [HERE](#).



## Registry Committee

Our new Registry Quality Reporting Platform went live in December and we are excited to hear from so many of you that have already put it to great use. If you are just getting started in the platform, an introductory webinar is on our website and can be accessed [here](#).

Due to this transition, the ArborMetrix platform is no longer available. Please update your bookmarks & any saved websites to our new URL: <https://www.elseo.org/home/domo.aspx>

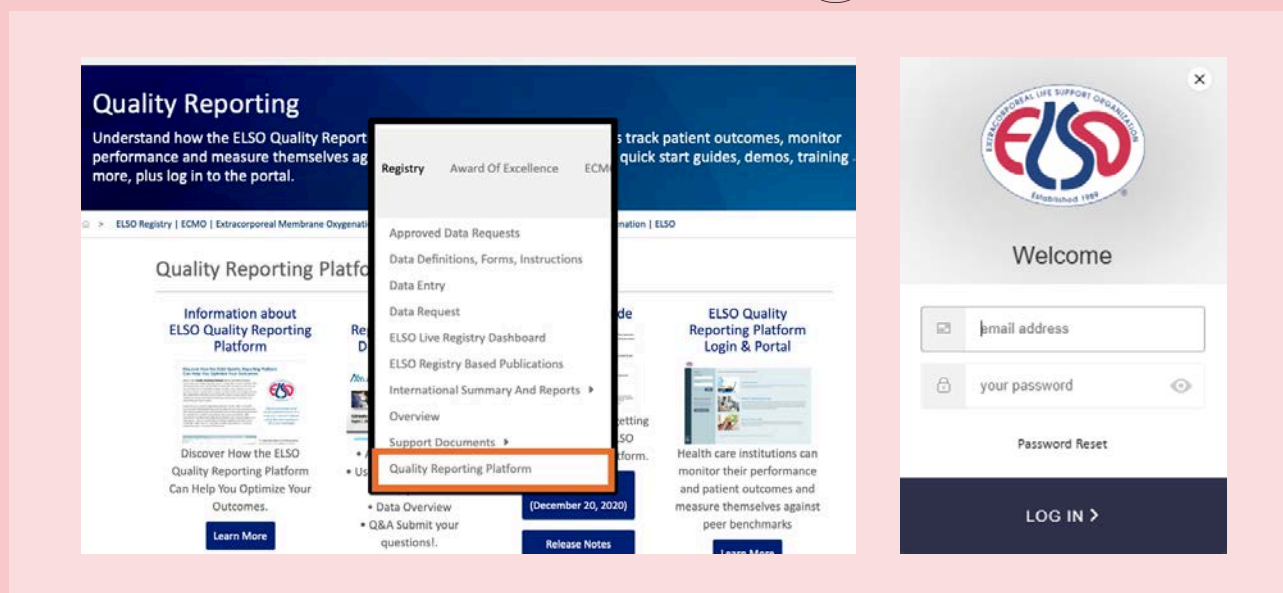
A few major changes are highlighted below:

- **Software Update** - New interface with Domo, an industry-leading data visualization tool
- **Single Sign On** - log in directly to the platform via ELSO.org
- **Interactive & Intuitive Design** - add custom date ranges, filters, and peer groups to assess and compare your center's data
- **Extract Your Data** - quickly download your center's data based on the defined filters

Our new platform has launched with many of the features and functionality that you are familiar with. Additional features are still to come, including:

- Time Interrupted Series charts
- Risk Adjustment for Mortality - by patient population & ECLS mode
- Additional Data Views & Filter Options

If you have any additional questions regarding the transition or have suggestions for future updates, please email us at [ELSOqualitysupport@elseo.org](mailto:ELSOqualitysupport@elseo.org). A new WhatsApp group for discussion is: ELSO Registry Quality Benchmarking Platform. To join, click [here](#).





---

## Research Committee

Please share this survey with your cardiac surgeons: <https://www.surveymonkey.com/r/CardiacGraftSurvey>.

Please contact [research@elso.org](mailto:research@elso.org) for any suggestions you might have for the committee.

---

## Technology & Innovation Committee

The Technology and Innovation Committee is currently seeking committee members with specific interests in developing projects centered around the following topics that we hope to roll out in 2025. Please contact the Chair-elect Timothy M. Maul, CCP, PhD at [tmaul@elso.org](mailto:tmaul@elso.org) for details or to get involved.

- **How I Do It Webinars** We are looking to elevate diverse perspectives from our global ELSO Community on your best practices across ECMO related topic areas. We will be scheduling webinars to be held for free via Zoom. so please keep an eye on our social media channels for more information.
  - **Creation of a Device Compendium** on the ELSO website that will be a living document for all available cannula, oxygenators, pumps, and heat exchangers across the globe and provide basic comparisons of technical features.
  - **Development of a quarterly or semi-annual survey** to global ELSO institutions to assess equipment utilization, new technology hitting the global markets, and impacts of supply chain issues. This data may be incorporated with a new Registry Project to update the 2012-2017 data published in ASAIO in 2021. We would like to publish an update to the way that centers are utilizing technology (circuits and remote monitoring) on a regular basis (every 5 years or so).
- 

## FELSO

The next application cycle for FELSO is from April 1, 2025 through June 30, 2025! FELSO is the honorary designation recognizing extraordinary contributions to the art and science of ECLS. Applications will receive consideration by the FELSO Nominations Committee. When released, the application will be available [here](#). Self-nominations will not be accepted.

For more information please email [FELSO@elso.org](mailto:FELSO@elso.org)

## NOMINATIONS & MEMBERSHIP COMMITTEE

### MEMBER HIGHLIGHT



#### **Sharada H. Gowda, MD. FAAP**

Associate Professor of Pediatrics  
Baylor College of Medicine  
Houston, TX. USA

It was during Navarathri and Deepavali I was posted at Sri Jayadeva institute of Cardiology in Bengaluru, India as a brand new medical student two decades ago. Visiting the cardiac OR changed my life's mission and my vision was a lot clearer. I knew neonates with congenital heart disease and neonatal cardiac critical care was my passion.

Pursuing that path was not easy. It was the road less travelled for a neonatologist. Although at times I felt I am neither a neonatologist despite training as one, and nor a cardiac intensivist despite undergoing the same training as my esteemed colleagues who enjoy taking care of this vulnerable population.

The gap and disconnect was at times unnerving. I had to shed my inhibitions of being a foreigner (really, I am an Indian girl with an accent in the heart of Texas) and forge ahead. With the help of few allies, (Thank you Drs. Guner, Swol, Hosakote, Barbaro, Gien) I finally have arrived at the inn and am happily participating in ELSO educational endeavors and scholarly activities, all while learning and attempting to improve outcomes one baby at a time.

I graduated from Bangalore Medical College, completed my pediatric residency in NYMC, Neonatology fellowship at Rutgers Medical School, and my Pediatric Cardiac Critical Care at Baylor College of Medicine. I have been working at Texas Children's Hospital since 2016. I truly believe it is a privilege to care for neonates and I am glad I persevered. Every day reminds me of the grit and strength of these tiny hearts and I am humbled to be taking care of them and learning from them.





## **ELSO Communities - Real-Time Support & Collaboration on WhatsApp**

If you have a question or need advice, please join one of the discussions. Please also contribute your own practices and advice to help your ELSO colleagues. To join a community visit the ELSO [website](#). You will be required to download WhatsApp on your phone. Communities are designed to be a support for our members that want to connect, collaborate, and support each other on a topic.

---

## **SURVEY ALLEY**

### **Relationship of Intravascular Hemolysis on ECMO and Acute Kidney Injury**

We are a multidisciplinary team at the University of Iowa interested in studying the relationship of intravascular hemolysis on ECMO and acute kidney injury. We are hoping to gather information about practice patterns regarding monitoring and treating hemolysis on ECMO. This short survey study was deemed not to be human subjects research by our local institutional review board. Your name and affiliation are asked, but providing this information is completely optional. The survey was designed to take <3 minutes of your time and your feedback will play a vital role in guiding our efforts, so we appreciate your consideration.

Primary survey contact: Amy Strong [amy-strong@uiowa.edu](mailto:amy-strong@uiowa.edu)

Please take a moment to complete the survey here: <https://redcap.link/4bj6w688>

### **Calling All ELSO Centers: Submit Your Surveys for "Survey Alley"!**

Do you have a survey you'd like to share with the ELSO community? We're now accepting submissions for our "Survey Alley" section! This is a great opportunity to gather insights, feedback, or data from your peers around the globe.

If you're interested in having your survey featured in our next newsletter, simply email your submission to [newsletter@elso.org](mailto:newsletter@elso.org).

We look forward to your contributions!

## BEDSIDE WITH BARTLETT

### A NOTE ON THE FUTURE OF THE SECTION



**Robert Bartlett, MD**

Founder, Board of Directors Emeritus  
ELSO Professor Emeritus of Surgery University of Michigan

For many years 'Bedside with Bartlett' has been one of the highlights of the ELSO newsletter, allowing the ECMO community to hear Dr Bartlett's numerous insights into specific clinical problems related to ECMO across every age range, indication, and cannulation strategy. However, Dr Bartlett has now expressed a desire to pass this responsibility onto others. ELSO is throwing open an invitation to everyone in our community to contribute cases which the authors believe demonstrate an important principle (or two) in ECMO management, whether that is in neonatal, pediatric, or adult patients. We encourage ELSO institutions to submit a brief case history to our new Newsletter section 'Circuit Chatter', to highlight both the principal clinical details and learning points for the community, between 300-700 words. This will then be edited and published.

The deadline for potential submissions will be the last day of every odd-numbered month, i.e., 31st Jan, Mar, May, etc.

Please email [newsletter@elso.org](mailto:newsletter@elso.org) with your cases and teach the community about what you learned!



## FAREWELL BEDSIDE WITH BARTLETT

*WRITTEN BY PAST PRESIDENT GRAEME MACLAREN*

A young boy was hospitalized with acute myeloid leukemia. He underwent several cycles of chemotherapy, the last of which was complicated by febrile neutropenia and septic shock. After two weeks of treatment, he improved hemodynamically but was unable to be weaned from positive pressure ventilation. Several days later, he deteriorated and was unable to be safely mechanically ventilated. He was placed on venovenous ECMO.

From day 2 of the ECMO run onwards, he grew *Stenotrophomonas maltophilia* in blood cultures. Despite treatment with intravenous trimethoprim and sulfamethoxazole, he remained bacteremic. Computerized tomography and transthoracic echocardiography did not reveal any evidence of metastatic or deep infection. After several days, intravenous polymyxin B was added but with no effect on the bacteremia, despite both agents being seemingly effective in-vitro.

After three weeks, the circuit was electively changed in an attempt to reduce the burden of bacteria but without effect. After a month of ECMO, he remained with unresolving severe ARDS, bacteremia, and was unable to be weaned from support.

What should be done about the bacteremia and persistent lung injury? Everything short of changing the ECMO cannulas was tried, including a circuit change and using two antibiotics with different mechanisms of action. Is this futile? Should we withdraw care?

In short, no. Nosocomial infections during ECMO are a common problem, especially in immunosuppressed patients such as chemotherapy recipients and those with leukemia. It is important to remember that source control of the infection is often impossible until the patient is decannulated, so adhering to traditional courses of antibiotics may be misguided. Despite effective antibiotic therapy, this patient remained persistently bacteremic and his lung injury did not improve after a month of support. The principle guiding his management is that this degree of lung injury can resolve despite such complications if every effort is made to minimize ventilator-induced lung injury and treat underlying infection. Patients should not have ECMO arbitrarily withdrawn because of unresolving lung injury.

With ongoing antibiotics and supportive care, this patient's pulmonary infiltrates began to resolve after five weeks of ECMO. He was able to be decannulated a few days later. His bacteremia ceased the following day. He was successfully discharged from hospital and his leukemia has been in remission for several years.



## ELSO CHAPTER UPDATES: ECMO AROUND THE WORLD

### APELSO



- **APELSO 2025 Conference:** Scheduled for July 10-12, 2025, in Beijing at the Landmark Towers Hotel. Professor Xiaotong Hou will chair the event.
- **APELSO 2026 Conference:** To be held June 12-14, 2026, in Tokyo, Japan, as a joint conference with the Japanese Society for Therapeutics and Engineering at Hamamatsucho Convention Hall.
- **Revision of APELSO Bylaws:** A review is underway to enhance organizational structure and community unity, following discussions chaired by Dr. Hwa Jin Cho.

Shingo Ichiba, MD, PhD, APELSO Chair

---

### EUROELSO

We hope you will join us at EuroELSO 2025 from April 23-26, 2025 in Milan, Italy! Early bird [registration](#) is available through March 3rd.



Scientific program can be found [here](#)

### New Call for EuroELSO Grant Proposals

The EuroELSO Grant Programme continues and enables healthcare professionals and scientists to undertake research or develop educational content in line with the objectives of EuroELSO. Four grants with a maximum value of EUR 15,000 are available and it is anticipated that at least one will have reference to pediatric practice and one will have reference to adult practice.

Applications will be accepted from any healthcare professional (including physicians, nurses, perfusionists, and therapists) or a research scientist – application deadline is March 31, 2025. More information can be found [here](#).

Mirko Belliato, MD, PhD, EuroELSO Chair



## ELSO CHAPTER UPDATES: ECMO AROUND THE WORLD

### SWAAC ELSO

**Education:** The SWAAC ELSO annual meeting took place in Abu Dhabi, UAE February 6–8, 2025 and was very successful with over 1000 delegates. The conference included fully booked preconference workshops and the long waited for TRAIN THE TRAINERS course with 32 participants from all over SWAAC region.

**SWAAC ELSO App:** The SWAAC ELSO app is now available, please download it to stay up to date on news and activities. You can download the app [here](#).

**2026 SWAAC ELSO Annual Meeting:** Mark your calendar for the next annual meeting which will be in Chennai, India on 5–8th February 2026.

**Follow Us:** Stay updated on SWAAC ELSO news and course dates via X, Instagram, and LinkedIn.

Huda Alfoudri, MD, SWAAC ELSO Chair



### LATAM ELSO

The 28th Brazilian Congress of Pediatric Cardiology, Congenital Heart Disease, Intervention and Pediatric Cardiac Surgery will take place from March 19 to 22, 2025 in the city of Gramado, in the State of Rio Grande do Sul.

During the Congress we will have the ELSO LATAM Symposium with a qualified technical team addressing several topics, more information, including the full scientific agenda and registration can be found [here](#).

Guillermo Moreno, LATAM ELSO Chair



## CHIEF EXECUTIVE OFFICER REMARKS

### Supporting Each Other

We have we managed a lot together over these past few years. We can look at the COVID-19 pandemic increasingly from the rear view mirror - a perspective that I hope we can continue to enjoy. During that time, we advanced care, collaboration, and knowledge while also doing our best to support each other. The spirit of collaboration that was so palpable then is worth casting as an anchor for us to keep a foothold in a time of growing uncertainty. What we can count on is our global family of ECLS providers of all kinds and from all around the world. Perhaps the silver lining from the pandemic can help us navigate this next era together.

Since then, we have added a few more ways to collaborate and provide support for your work, such as our WhatsApp groups. We can always do better, and we want to. If you see an error or issue, or you have an idea to make things better, please let us know. We will soon be launching the Bedside Guide app, which will be available on Android and Apple phones through the app stores. This will be free and available globally. We hope to make this a useful tool. As you see opportunities to improve this app, please let us know.

Having just returned from our SWAAC ELSO Chapter meeting, I am grateful for the 1,100 people gathered there. The enthusiasm, camaraderie, and commitment were in the air. It is especially an inspiration to hear what our colleagues are able to do in resource-constrained regions.

Thank you for continuing to show up, take care of your patients and your teams, and push the boundaries to create a better future. Thank you to the many members everywhere that are already involved, and hopefully many more to come. An exciting time lies ahead for advancements in science, care delivery, and improved patient outcomes - thanks to all of you!

I would love to hear from you and spend time together at our upcoming meetings in Milan, Beijing, and Washington, D.C.

Christine Stead, CEO



# The Extracorporeal Life Support Organization

## Our Mission

Providing global leadership in extracorporeal life support through innovation, advocacy, and advancing knowledge.

## Our Vision

ELSO will be the premier organization for the advancement of extracorporeal life support throughout the world.

## Guiding Principles

### Innovation

Seeking to identify and promote advances for the application of extracorporeal therapies.

### Expertise

Bringing together world leaders in the care of critically ill patients for collaboration to advance quality of care through education and publication.

### Clinical Support

Maintaining a comprehensive registry of data to assist in reducing morbidity and improving survival of patients requiring extracorporeal therapies.

### Community

Fostering communication and collaboration among professionals who apply advanced technologies in the treatment of refractory organ failure.



@ELSO.Org



@ELSOOrg



@elso\_official



@ELSO



@TheELSO

The Extracorporeal Life Support Organization (ELSO)  
3001 Miller Road, Ann Arbor, Michigan 48103, USA

[www.elso.org](http://www.elso.org)

For editorial concerns related to this newsletter, please contact [newsletter@elso.org](mailto:newsletter@elso.org).

Copyright © 2023 The Extracorporeal Life Support Organization. All Rights Reserved.